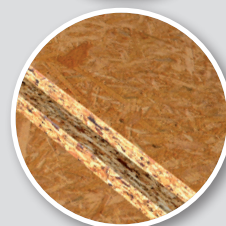
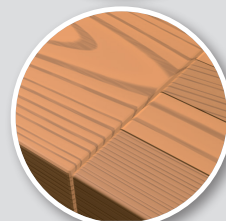


fischer Termofix 6H-NT

The screw fixing with the proven Power-Fast screw from fischer.



fischer 
innovative solutions

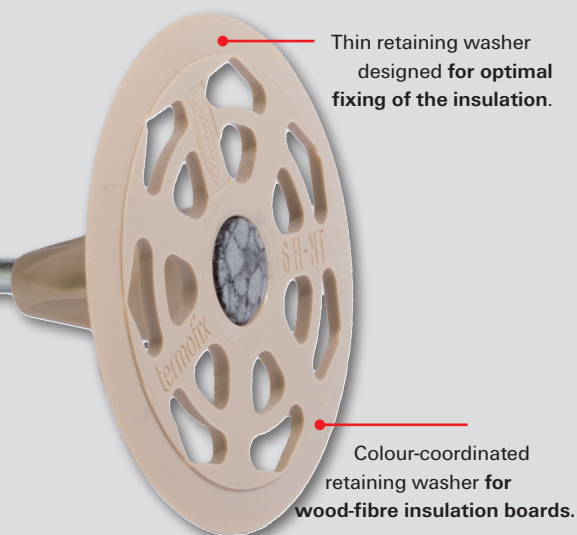
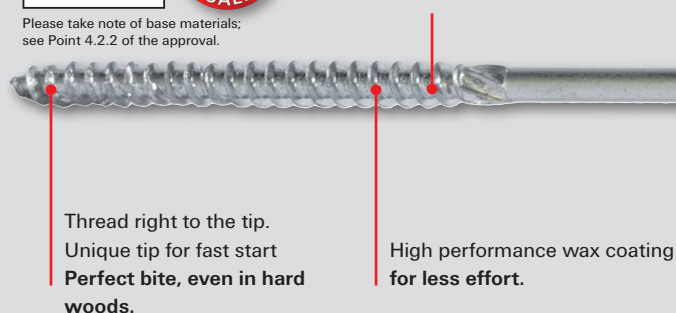
Termofix 6H-NT – The screw fixing for ETICS insulation boards to wood and panel building materials.



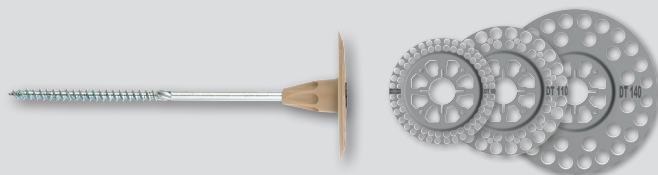
Please take note of base materials;
see Point 4.2.2 of the approval.



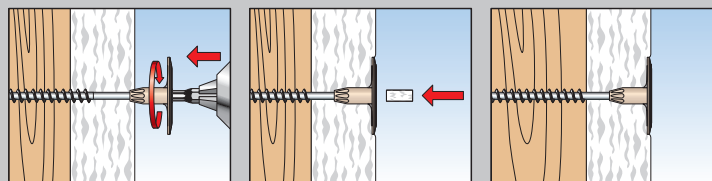
Approved
Power-Fast screw.



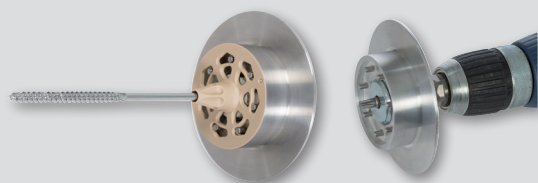
Flush-mounted installation.



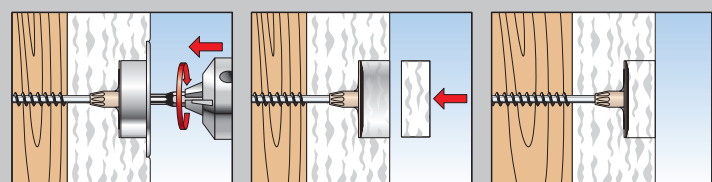
Installation



TSS setting tool for counter bored installation.



Installation

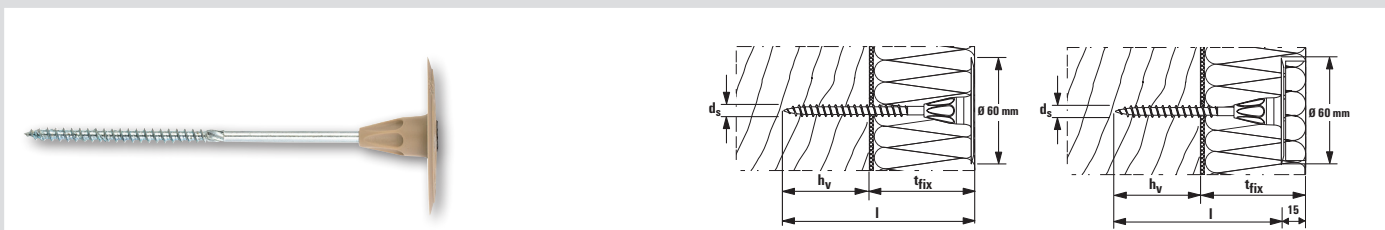


- The Termofix 6H-NT is suitable for base materials including: 3-layer panels, MDF and OSB panels, chipboard, gypsum fibreboard and solid wood.
- The 6H-NT screw fixing is suitable for fixing ETICS insulation boards such as polystyrene, mineral fibres, wood fibres and polyurethane.
- Depending on requirements, the Termofix 6H-NT can be combined with fischer insulation discs DT 90, DT 110 and DT 140.

Your advantages at a glance

- The thin washer allows for flush-mounted installation and a thin layer of plaster.
- The pre-assembled fischer Power-Fast screw with approval ensures a secure hold in the base material.
- The minimum screw-in depth of 30 mm allows for fast installation. No pre-drilling necessary.
- Seal plugs enclosed in all packets.
- Counterbored installation possible using the TSS setting tool in the case of soft insulation boards like polystyrene PS 15 or PS 20. The anchor plate is covered with a cap, thus creating a homogeneous insulation surface. The complex process of filling the void is therefore not required.

Products, technical data and recommended loads.



Termofix 6H-NT

Product	Item No.	Anchor nominal length l [mm]	Washer-Ø r _d [mm]	Screw diameter d _s [mm]	Flush-mounted installation		Counter bored installation e.g. Polystyrene PS 15 / PS 20		Sales unit / plugs incl. [pcs]
					h _v [mm]	Effect. length t _{fix} [mm]	h _v [mm]	Effect. length t _{fix} [mm]	
Termofix 6H-NT 60	523198	60	60	6	30	30	-	-	100
Termofix 6H-NT 80	523199	80	60	6	30	50	30	65	100
Termofix 6H-NT 100	523200	100	60	6	30	70	30	85	100
Termofix 6H-NT 120	523201	120	60	6	30	90	30	105	100
Termofix 6H-NT 140	523202	140	60	6	30	110	30	125	100
Termofix 6H-NT 160	523203	160	60	6	30	130	30	145	100
Termofix 6H-NT 180	523204	180	60	6	30	150	30	165	100
Termofix 6H-NT 200	523205	200	60	6	30	170	30	185	100
Termofix 6H-NT 220	523206	220	60	6	30	190	30	205	100
Termofix 6H-NT 240	523207	240	60	6	30	210	30	225	100
Termofix 6H-NT 260	523208	260	60	6	30	230	30	245	100
Termofix 6H-NT 280	523209	280	60	6	30	250	30	265	100
Termofix 6H-NT 300	523210	300	60	6	30	270	30	285	100
Termofix 6H-NT 320	523211	320	60	6	30	290	30	305	100
Caps MW D60	046172	-	-	-	-	-	-	-	100
Caps PS D60	046173	-	-	-	-	-	-	-	100
TSS setting tool	524128	-	-	-	-	-	-	-	1
DT 90	008889	-	-	-	-	-	-	-	100
DT 110	090745	-	-	-	-	-	-	-	100
DT 140	008690	-	-	-	-	-	-	-	100

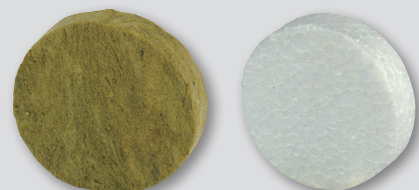
Recommended loads

	thickness [mm]	[kN]
Wooden beam	60	0,62*
3-layer panel	19	0,50
MDF panel	19	0,50
OSB panel	16	0,40
Chipboard	16	0,30
Gypsum fibreboard	12,5	0,15

*1.00 kN for a screw-in depth of 40 mm.

The recommended loads were calculated using a safety factor of 3.
Deviations are possible depending on the materials used.

The values were calculated with a screw-in depth of 30 mm.



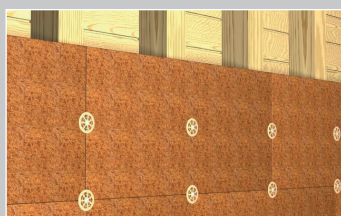
Mineral wool caps

Polystyrene caps

Applications



Fixing of polystyrene boards on wood panel building materials



Fixing of soft wood fibreboards on solid wood



Fixing of soft polystyrene boards on solid wood

fischer FIXPERIENCE. The design and information software suite.



- The modular design program includes engineering software and application modules.
- The software is based on international design standards (ETAG 001 and EC2, such as EC1, EC3 and EC5), including the national application documents. All common force and measurement units are available.
- Incorrect input will be recognized and the software gives tips to get a correct result. This ensures a safe and reliable design every time.
- The graphical display can easily be rotated through 360°, panned, tilted or zoomed as required.
- The 3D display gives a detailed and realistic image.
- The "live update" feature helps to keep the program up to date ensuring you are always working with the latest version.
- Free download and updates at www.fischer.de/fixperience-en

Our service to you.



We are available to you at any time as a reliable partner to offer technical support and advice:

- Our products range from chemical resin systems to steel anchors through to nylon anchors.
- Competence and innovation through own research, development and production.
- Global presence and active sales service in over 100 countries.
- Qualified technical consulting for economical and compliant fastening solutions. Also on-site at the construction site if requested.
- Training sessions, some with accreditation, at your premises or at the fischer ACADEMY.
- Design and construction software for demanding applications.

Regional Presence

U.A.E

fischer FZE (Regional Office)
R/A 07, BA 01 - 04
Jebel Ali Free Zone
Dubai, UAE
P. O. Box 261738
Tel: +971 4 883 7477
Fax: +971 4 883 7476
Email: enquiry@fischer.ae

Abu Dhabi

Tel: +971 2 552 5777
Fax: +971 2 552 6566
Email: enquiry@fischer.ae

State of Qatar

Tel: +974 4036 3100
Fax: +974 4471 0898
Email: qatar@fischer.ae

Kingdom of Saudi Arabia

Tel: +966 13 8140866
Fax: +966 13 8140855
Email: saudi@fischer.ae

State of Kuwait

Tel: +965 2481 8786,
+965 2482 5972
Fax: +965 2481 8385
Email: kuwait@fischer.ae

Kingdom of Bahrain

Tel: +973 17408090
Fax: +973 17404323
Email: bahrain@fischer.ae

Sultanate of Oman

Tel: +968 24445425/26/27/28/30
Fax: +968 24445423
Email: oman@fischer.ae

Pakistan

Tel: +923 01 8266216
Email: pakistan@fischer.ae

Follow us:



www.fischer.ae

fischer 
innovative solutions