



fischer termoz CNplus

The versatile ETICS hammerset fixing with
the option to be screw set



termoz CNplus

The versatile ETICS hammer set fixing with the option to be screw set

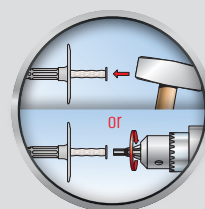
The compression zone in the shaft enables a precise disc pull-in and an optimum application on the insulation surface.

With a disk thickness of only 2.5 mm, this is applied optimally on the insulation panel. In this manner cost-effective thin reinforcement layers can be applied.

Due to the special geometry of the compound nail, this is almost free of thermal bridges and there is nearly no loss of heat transmission.

Due to the steel portion in the nail no change of plug is necessary between the anchoring of the fire block insulation panel and the surface (40% rule only valid for Germany and Swiss).

The asymmetrical expansion part ensures optimum anchorage in the perforated brick. The ETA regulates the use in all building material.



Function

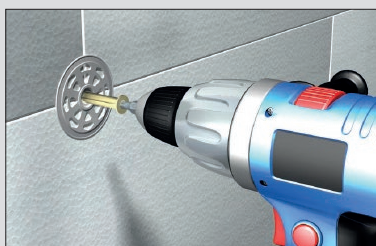


Your benefits at a glance

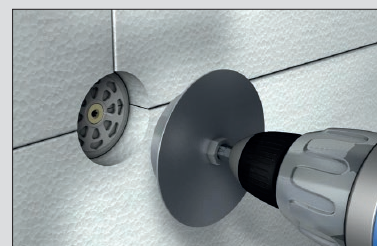
- termoz CNplus is a hammer set with the option to be screw set. The plug is suitable for all building material and insulation types. Through the flexible use the warehouses and ordering processes are reduced.
- With the fast and simple hammer set installation the plugs set too deep can be readjusted with the aid of the screwdriver. This saves working time and helps to avoid fixing marks.
- During the screw installation the termoz CNplus can be set recessed or flush. For different set results only one plug is required.
- Moreover the screw installation enables an accurate setting due to an optimum application on the insulation surface. Also with soft insulation.
- The compound nail ensures a high energy efficiency with the countersunk screw installation, because there is nearly no heat transmission.



Flush hammer set installation

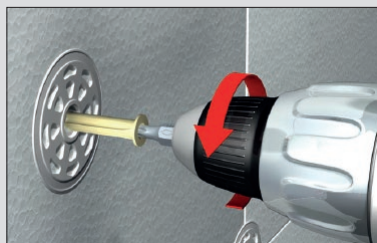


Flush screw installation



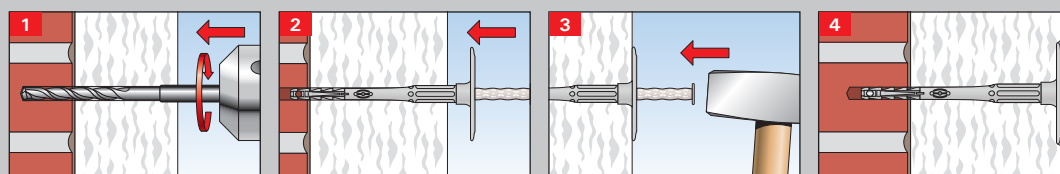
Countersunk screw installation

The sustainable hammer set anchor

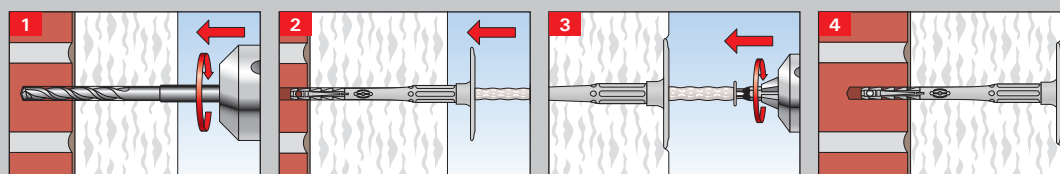


- The termoz CNplus allows a simple and clean removal for an unmixed dismantling of the façade.
- A separated disposal is guaranteed.

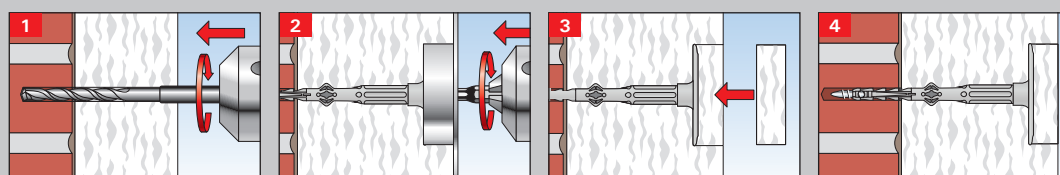
Standard: Flush hammer-set installation



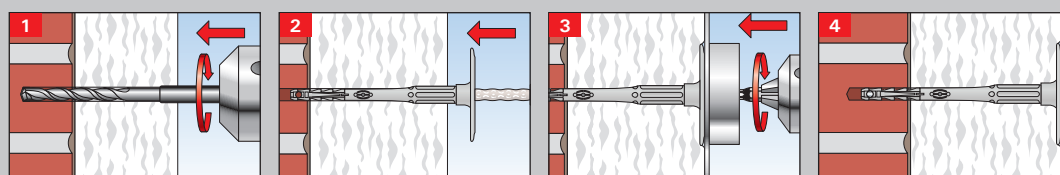
Standard: Flush screw installation standard bit T25



Standard: Countersunk screw installation with setting tool CS



Alternative screw installation: Flush installation with rotated setting tool CS



Recommendation

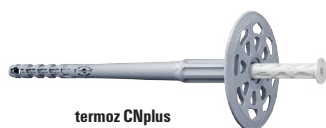


- Suitable for:
concrete, solid brick, solid sand-lime brick, solid blocks made from lightweight and normal weight concrete, vertically perforated brick, perforated sand-lime brick, porous lightweight concrete, aerated concrete, hollow blocks made from lightweight concrete

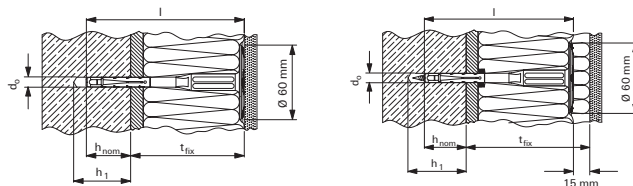
Approval



Product range and technical data



termoz CNplus



termoz CNplus

Product	Art. No.	Approval	Anchor length	Anchor nominal length	Min. anchorage depth	Flush installation / only for building material class A,B,C		Countersunk installation / only for building material class A,B,C		Min. anchorage depth	Flush installation / only for building material class D and E		Countersunk installation / only for building material class D and E		Sales unit
						Min. drill hole depth	Effect. length	Min. drill hole depth	Effect. length		Min. drill hole depth	Effect. length	Min. drill hole depth	Effect. length	
		ETA	l [mm]	l [mm]	h _{nom} [mm]	h ₁ [mm]	t _{fix} [mm]	h ₁ [mm]	t _{fix} [mm]	h _{nom} [mm]	h ₁ [mm]	t _{fix} [mm]	h ₁ [mm]	t _{fix} [mm]	[pcs]
termoz CNplus 8/110	540376	■	108	110	35	45	70	60	90	55	65	70	80	70	100
termoz CNplus 8/130	540377	■	128	130	35	45	90	60	110	55	65	90	80	90	100
termoz CNplus 8/150	540378	■	148	150	35	45	110	60	130	55	65	110	80	110	100
termoz CNplus 8/170	540379	■	168	170	35	45	130	60	150	55	65	130	80	130	100
termoz CNplus 8/190	540380	■	188	190	35	45	150	60	170	55	65	150	80	150	100
termoz CNplus 8/210	540381	■	208	210	35	45	170	60	190	55	65	170	80	170	100
termoz CNplus 8/230	540382	■	228	230	35	45	190	60	210	55	65	190	80	190	100
termoz CNplus 8/250	540383	■	248	250	35	45	210	60	230	55	65	210	80	210	100
termoz CNplus 8/270	540384	■	268	270	35	45	230	60	250	55	65	230	80	230	100
termoz CNplus 8/290	540385	■	288	290	35	45	250	60	270	55	65	250	80	250	100
termoz CNplus 8/310	540386	■	308	310	35	45	270	60	290	55	65	270	80	270	100
termoz CNplus 8/330	540387	■	328	330	35	45	290	60	310	55	65	290	80	290	100
termoz CNplus 8/350	540388	■	348	350	35	45	310	60	330	55	65	310	80	310	100
termoz CNplus 8/370	540389	■	368	370	35	45	330	60	350	55	65	330	80	330	100
termoz CNplus 8/390	540390	■	388	390	35	45	350	60	370	55	65	350	80	350	100

For countersunk screw installation the setting tool art. no. 532618 or art. no. 532619 with the bit art. no. 540251 can be used.
Drill hole diameter 8 mm and bit T25 with all hammer-set anchor.

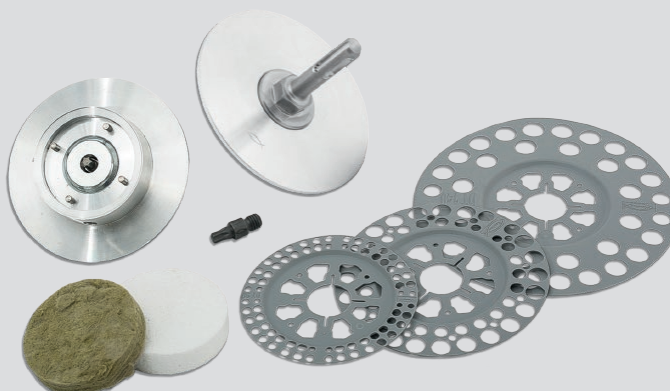
Accessories

Description	Item No.	Ø [mm]	sales unit [pcs]
Caps PS D60	046173	60	100
Caps MW D60	046172	60	100
Hexa setting tool CS*	532618		1
SDS setting tool CS*	532619		1
Bit T 25 CNplus 26 mm**	540251		1
DT 90***	008889	90	100
DT 110***	090745	110	100
DT 140***	008690	140	100

* incl. Bit T30

** suitable for setting tool termoz CS

*** suitable for termoz CNplus



Loads

termoz CNplus 8³⁾

Highest permissible loads for a single anchor ^{1) 4)} for fixing of external thermal insulation composite systems with rendering. For the design the complete assessment ETA 09/0394 has to be considered.

Concrete and masonry ⁵⁾							
Base material	Brick raw density	min. compressive brick strength	min. embedment depth	min. member thickness	permissible tensile load ³⁾	min. spacing ²⁾	min. edge distance ²⁾
	ρ [kg/dm³]	f _b [N/mm²]	h _{nom} [mm]	h _{min} [mm]	N _{perm} [kN]	s _{min} [mm]	c _{min} [mm]
Concrete acc. EN 206-1:2000							
	C12/15 - C50/60		35 ⁶⁾	100	0,30	100	100
Weather resistant concrete shell							
	≥ C20/25		35 ⁶⁾	42	0,30	100	100
Calcium silicate solid bricks KS acc. EN 771-2:2011							
	≥ 1,8	20	35 ⁶⁾	100	0,30	100	100
Solid clay bricks Mz acc. EN 771-1:2011							
	≥ 1,8	20	35 ⁶⁾	100	0,30	100	100
Solid concrete blocks Vbn acc. EN 771-3:2011							
	≥ 2,0	20	35 ⁶⁾	100	0,30	100	100
Hollow calcium silicate bricks KSL acc. EN 771-2:2011							
	≥ 1,4	16	35 ⁶⁾	100	0,17	100	100
Vertically perforated clay bricks HLz acc. EN 771-1:2011							
	≥ 1,0	12	35 ⁷⁾	100	0,17	100	100
	≥ 1,6	48			0,25		
Lightweight concrete blocks Vbl acc. EN 771-3:2011							
	≥ 1,6	10	35 ⁶⁾	100	0,25	100	100
Lightweight concrete hollow blocks Hbl acc. EN 771-3:2011							
	≥ 1,2	10	35 ⁶⁾	100	0,20	100	100
Lightweight aggregate concrete LAC acc. EN 1520:2011, EN 771-3:2011							
	≥ 0,9	6	55 ⁶⁾	100	0,13	100	100
Autoclaved aerated concrete blocks AAC acc. EN 771-4:2011							
	≥ 0,4	4	55 ⁷⁾	100	0,10	100	100

¹⁾ The partial safety factors for material resistance as regulated in the assessment as well as a partial safety factor for load actions of $\gamma_F = 1,5$ are considered.

²⁾ Minimum possible axial spacings resp. edge distances acc. assessment.

³⁾ Plastic anchor for fixing of external thermal insulation composite systems with rendering acc. ETAG014. Only tensile wind loads are permitted.

⁴⁾ The given loads are valid for installation and use of fixations in dry masonry for temperatures in the substrate up to +24°C (resp. short term up to 40°C).

⁵⁾ Restrictions concerning the manufacturer and the permissible hole patterns as well as the web thickness see assessment.

⁶⁾ Hammer drilling

⁷⁾ Rotary drilling

fischer FIXPERIENCE.

The design and information software suite.



- The modular design program includes engineering software and application modules.
- The software is based on international design standards (ETAG 001 and EC2, such as EC1, EC3 and EC5), including the national application documents. All common force and measurement units are available.
- Incorrect input will be recognized and the software gives tips to get a correct result. This ensures a safe and reliable design every time.
- The graphical display can easily be rotated through 360°, panned, tilted or zoomed as required.
- The 3D display gives a detailed and realistic image.
- The "live update" feature helps to keep the program up to date ensuring you are always working with the latest version.
- Free download and updates at www.fischer.de/fixperience-en

Our service to you.



We are available to you at any time as a reliable partner to offer technical support and advice:

- Our products range from chemical resin systems to steel anchors through to nylon anchors.
- Competence and innovation through own research, development and production.
- Global presence and active sales service in over 100 countries.
- Qualified technical consulting for economical and compliant fastening solutions. Also on-site at the construction site if requested.
- Training sessions, some with accreditation, at your premises or at the fischer ACADEMY.
- Design and construction software for demanding applications.

Regional Presence

U.A.E

fischer FZE (Regional Office)
R/A 07, BA 01 - 04
Jebel Ali Free Zone
Dubai, UAE
P. O. Box 261738
Tel: +971 4 883 7477
Fax: +971 4 883 7476
Email: enquiry@fischer.ae

Abu Dhabi

Tel: +971 2 552 5777
Fax: +971 2 552 6566
Email: enquiry@fischer.ae

State of Qatar

Tel: +974 4036 3100
Fax: +974 4471 0898
Email: qatar@fischer.ae

Kingdom of Saudi Arabia

Tel: +966 13 8140866
Fax: +966 13 8140855
Email: saudi@fischer.ae

State of Kuwait

Tel: +965 2481 8786,
+965 2482 5972
Fax: +965 2481 8385
Email: kuwait@fischer.ae

Kingdom of Bahrain

Tel: +973 17408090
Fax: +973 17404323
Email: bahrain@fischer.ae

Sultanate of Oman

Tel: +968 24445425/26/27/28/30
Fax: +968 24445423
Email: oman@fischer.ae

Pakistan

Tel: +923 01 8266216
Email: pakistan@fischer.ae

Follow us:



www.fischer.ae

fischer 
innovative solutions