

Façade construction for stone cladding.





Basic information for natural stone.

When it comes to façade cladding it is about the outer appearance of the cladding which gives the building a stand-alone appearance. Furthermore, it is important to guarantee the appearance of the building for years to come. Both are equal prerequisites and optimally fulfilled by natural stone.

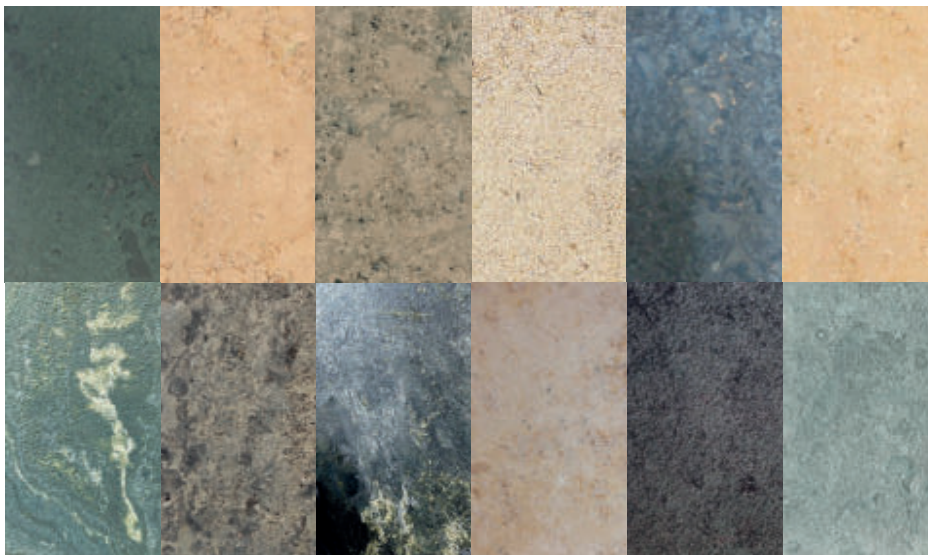
Natural stone is a very sustainable building material as stones are natural materials, which may be sourced globally. They are extracted from quarries and processed into façade panels using modern production and processing methods. Due to this, natural stone panels vary greatly in appearance and can be processed in a multitude of different ways, that is why a wide range of natural colours and textures are typical for this material.

Typical for natural stone façades is a long life-time, stability of material characteristics and low level of maintenance. Façades cladded with natural stone panels harmonize especially well with the surrounding historical architectural substance.

Façade panel thicknesses range from 20 mm to 60 mm. The common fixing method is undercut anchors for concealed fixing.

Fischer façade systems provide subframes for small or light panels as well as strong systems for maximum loads.

Backed with 35 years' experience fischer supports in material testing to evaluate design resistances.



Due to the worldwide availability of natural stone quarries there is a great variety in the type of natural stone panels like granite, limestone, sandstone, marble, slate, etc. Despite all variances they have one thing in common - they can be installed with fischer products.





Façade construction for stone cladding



La Grande Arche · Paris · France





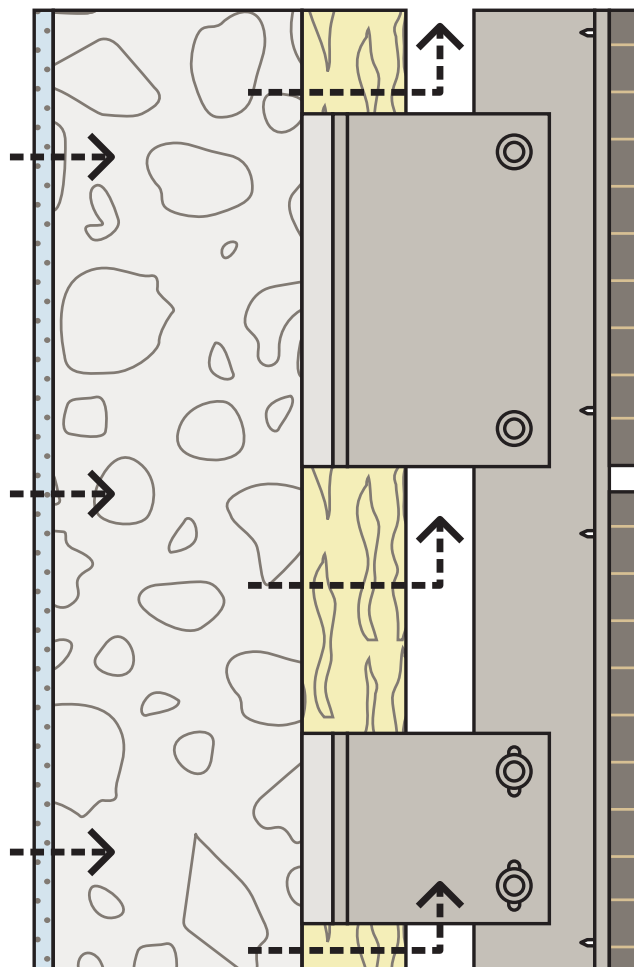
Functional principle rainscreen façades.

A rainscreen façade is a ventilated double-layer cladding system which structurally separates the weather protection and insulation functions. Based on many advantages compared to sealed façade systems rainscreen systems have become very popular nowadays. Besides the aesthetic advantages there are in addition functional and safety benefits, which include the rear ventilation cavity and non-combustible insulation materials. These systems are less susceptible to damage than other façade systems and provide a wide freedom of design. In addition, fire, noise and lightning protection requirements can be implemented.

fischer offers innovative, high-quality full façade systems for rainscreen façades. Besides functional and economical advantages, the fischer façade systems provide especially an outstanding architectural creative scope.

fischer goes beyond the state of the art by offering the following benefits:

- Subframe systems for all different cladding materials
- Flexible system for concealed applications
- Fast and uncomplicated installation reduces costs for the whole façade
- Complies with low and zero energy building standards
- Project-specific training, consultation and product solutions
- Global support by local representatives
- Experienced in façade systems for 35 years
- Complete façade system supplied out of one hand
- ETA and CE approved



Functional principle rainscreen façade with system components





The appearance they deserve with the fischer undercut technology.

Stone cladding

The fischer Zykon Panel Anchors FZP II allows concealed fixing of natural stone panels for rainscreen façades. The fitting drill hole is created by a conical undercut in a cylindrical hole. The harmonized geometry of the installed undercut anchor and the drill hole create a stress-free fixing. Only the impact of external forces causes internal reaction forces in the connection of the undercut anchor and natural stone panel. Similar to the undercut anchor, just as much know-how goes into the other components of the fischer façade system. The drilling techniques, quality assurance of drill holes and installation methods integrates the system perfectly.

With this complete system for undercut anchors, fischer offers architects and planners an innovative, high-quality solution for rainscreen façades. In addition to processing and economic advantages, the fischer façade system with undercut anchors provides an outstanding freedom of architectural design.



Benefits



On-site support



Technology leadership beyond the state-of-the-art



Cost efficiency of the overall system with fischer quality



Fast supply and installation of the system

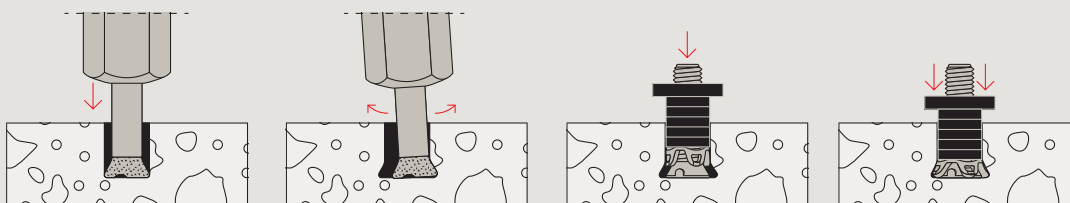


Global availability and supply of a complete system from a single source



Approved and third-party certified systems and in-house test laboratory

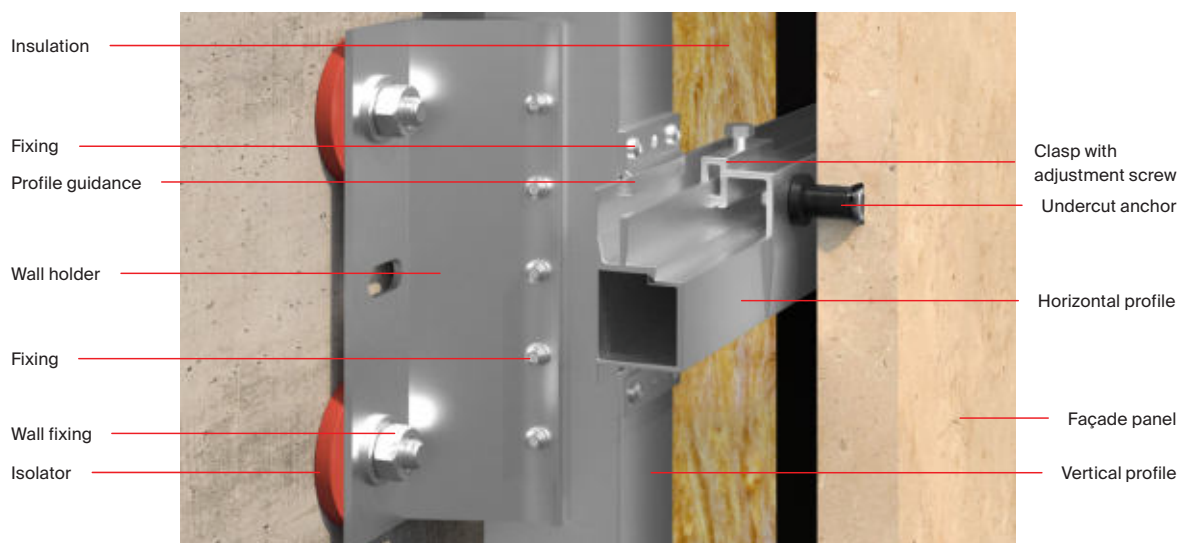
Installation





Subframe system for heavy duty systems of stone cladding.

Heavy duty system



Technical data

Concealed system			
Product type	Product description	Item No.	Annotation
Isolator	Cold Bridge Stop CBS	92680	PVC washer
Wall holder	FPH 68	48900	Fix point holder
Wall holder	SPH 68	48902	Sliding point holder
Wall fixing	FAZ II 10/10 A4	501403	Bolt anchor for concrete
Wall fixing	SXRL 10 x 80 FUS	522730	Frame fixing for masonry
Vertical profile	VP 80/2	48896	Aluminum profile, 6m
Fixing	Rivet 4,8X12 A4	521664	–
Horizontal profile	HP BS bracket solution	48899	Aluminum profile, 6m
Profile guidance	GLB	48906	For fix and sliding points
Clasp	BR-BS M8/100	78585	Clasp for fix or sliding point
Clasp	ES-BS	521673	Adjustment screw
Clasp	Fixit	48905	Fix point locking
Undercut anchor	FZP II 13x26 M8/SO/12 Carbon	538087	Stand-off anchor
Undercut anchor	FZP II 15x15 M8 I	539479	Internal threaded flush anchor

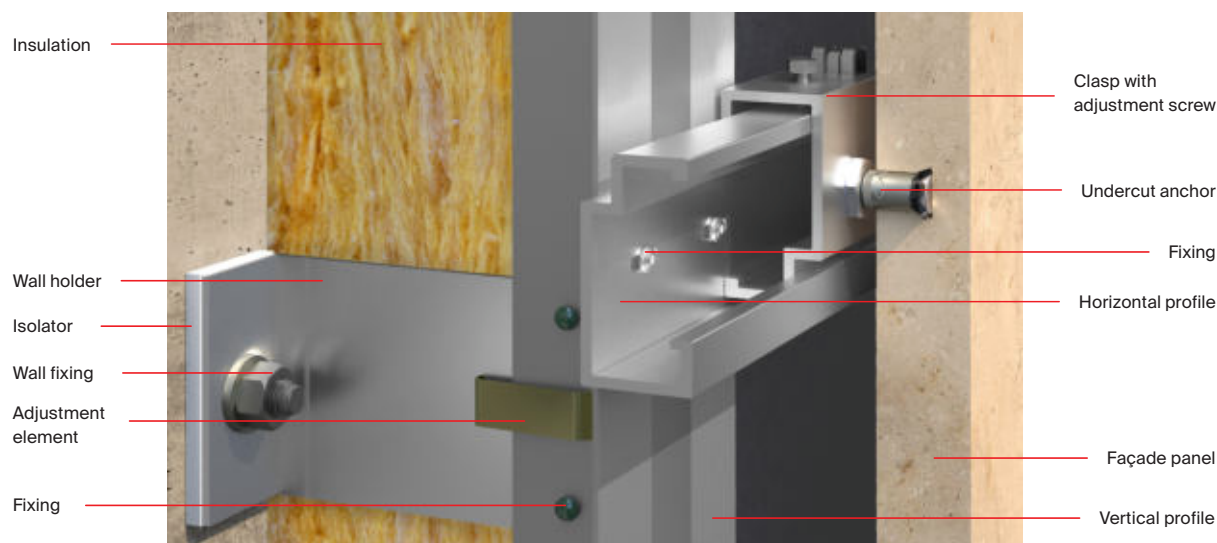
Typical items for a subframe systems as depicted. For more items, specific information and quotations we kindly ask you to refer to: facades@fischer.de or www.fischer-international.com/fischer-facade-systems





Subframe system for light systems of stone cladding.

Light system



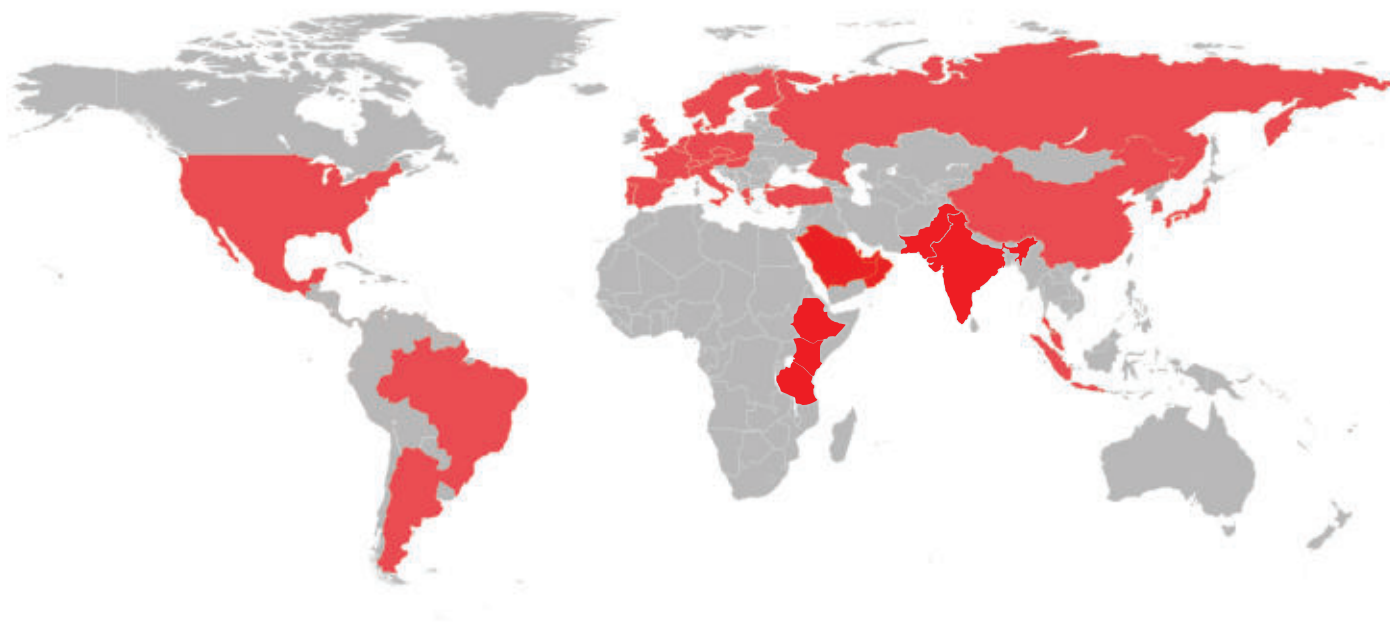
Technical data

Concealed system			
Product type	Product description	Item No.	Annotation
Isolator	Thermostop 40x150x6/11	546156	For fix points
Isolator	Thermostop 40x80x6/11	540741	For sliding points
Wall holder	FLH 120x150x3/11/F-SP AL	548083	Fix point holder
Wall holder	FLH 120x80x3/11/SP AL	548081	Sliding point holder
Wall fixing	FAZ II 10/10 A4	501403	Bolt anchor for concrete
Wall fixing	SXRL 10 x 80 FUS	522730	Frame fixing for masonry
Adjustment element	Helping Hand clip	547170	-
Vertical profile	T-Profile 100/52/2	548275	Aluminum profile, 6m
Fixing	Special Rivet SNA 5 x 12 K14	545591	-
Horizontal profile	H-Profil ATK103S/ t=2mm	547556	Aluminum profile, 6m
Clasp	ATK103 S, t2, B60, D6,5 adjustable	547538	Including fix point locking
Clasp	ATK103 S, t2, B36, D6,5 rigid	548288	For sliding points
Undercut anchor	FZP II 11X21 M6/S0/12 AL	512145	Stand-off anchor
Undercut anchor	FZP II 11X12 M6/13 A4	512131	Flush anchor

Typical items for a subframe systems as depicted. For more items, specific information and quotations we kindly ask you to refer to: facades@fischer.de or www.fischer-international.com/fischer-facade-systems



Global Presence



Regional Presence

UAE

fischer FZE (Regional Office)

R/A 07, BA 01 - 04
Jebel Ali Free Zone
Dubai, UAE
P. O. Box 261738
Toll Free: 800 FISCHER
Tel: +971 4 883 7477
Fax: +971 4 883 7476
Email: enquiry@fischer.ae

fischer Centre - Abu Dhabi

Mussafah, Abu Dhabi
Tel: +971 2 552 5777
Fax: +971 2 552 6566
Email: enquiry@fischer.ae

Sultanate of Oman

Tel: +968 24445425/26/27/28/30
Fax: +968 24445423
Email: oman@fischer.ae

Africa

Kenya

E: kenya@fischer.ae

Ethiopia

E: enquiry@fischer.ae

Tanzania

E: enquiry@fischer.ae

Kingdom of Bahrain

Tel: +973 17408090
Fax: +973 17404323
Email: bahrain@fischer.ae

Kingdom of Saudi Arabia

Tel: +966 13 8140866
Fax: +966 13 8140855
Email: saudi@fischer.ae

State of Kuwait

Tel: +965 249 29 556
Tel: +965 249 16 955
Email: kuwait@fischer.ae

Pakistan

Tel: +923 01 8266216
Email: pakistan@fischer.ae

fischer Experience Centre

fischer Centre - Abu Dhabi

Mussafah Industrial (M-6)
Tel: +971 2 552 5777
Fax: +971 2 552 6566
Email: enquiry@fischer.ae

fischer Experience Centre - Dubai

Warehouse No. 76, Plot NO. 599-419
Al Maktoum Complex,
Jebel Ali Industrial Area First
Tel: +971 4 395 7772
Email: enquiry@fischer.ae

fischer Experience Centre - Sharjah

Sharjah Building Materials Complex,
D-15 BMW Street,
Industrial Area
Email: enquiry@fischer.ae

REACH US NOW!!!



Scan me

For immediate support: (Toll Free)

☎ 800 FISCHER (UAE)

Follow us:



www.fischer.ae

